

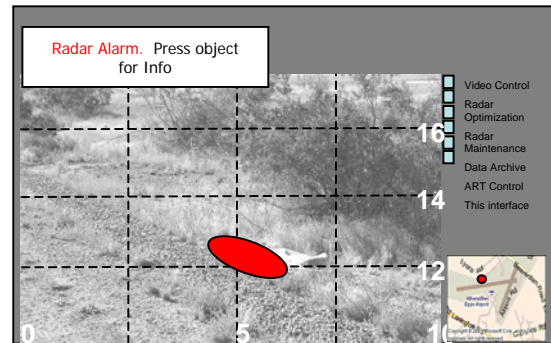
# MAVERICK

## Ground Penetrating Radar Technologies

PSI's Ground Penetrating Radar technologies (patent # 6,445,334) are used to integrate world-class, forward looking and downward looking, detection systems. Our stepped frequency, continuous wave radar electronics, and network centric acquisition and processing system provide a flexible system easily optimized to our customer's detection needs.

PSI's state-of-the art high speed digital electronics, signal processing, and data fusion technologies provide the system operator with real-time GPR imagery. No post processing is necessary. PSI's GPR imagery may be fused with other sensors, and displayed as overlays. PSI's system integration provides high precision geodetic mapping of the GPR data. Our fusion process provides operators with an efficient situational display of complex (GPR, video, GIS, etc.) data.

The top photograph on the right show one of many user views available from our GPR systems. The middle image shows a prototype forward looking system being tested by PSI. The bottom photograph shows one of PSI's downward looking GPR radome array assemblies.



**For more information contact:**

Don Steinman, Planning Systems Incorporated  
12030 Sunrise Valley Drive, Reston VA 20191  
[dsteinman@plansys.com](mailto:dsteinman@plansys.com)  
Tel. (703) 788-7753, Fax: (703) 390-5084